

# SIBERIAN SWAN

make a pointe



*When beauty appears, cannons fall in a void  
Your life in your hands, make your luck,  
make a pointe*

[www.SiberianSwan.com](http://www.SiberianSwan.com)





**Sergey Bobrov**

Honored artist of Russia

Artistic director of the  
Krasnoyarsk state opera  
and ballet theatre

*The State Ballet of Siberia is a big success story, not just locally, but worldwide as well. It demonstrated its accomplishments in both classical and contemporary productions, which brought international praise, respect, recognition, and critical acclaim.*

*But to be the best professional ballet company, means to strive for perfection in all areas related to dance. In the case of SBS, the company developed and delivered to it's dancers the best pointe shoes available. The developers goals were providing unmatched comfort, stability and longevity during the long rehearsal periods and of course performances.*

*The design process was a total collaboration between the dancers, computer aided design team and the manufacturers.*

*As the director, I am proud of the dancers and the design team for their professionalism and dedication. I wish them continuing success (and of course healthy feet).*

*The Siberian Swan Point shoes, best in every step, beautiful in flight.*

*Sergey Bobrov*



*Pavlova*   
HANDMADE BY SIBERIAN SWAN

*Pavlova+plus*



*Karsavina*   
HANDMADE BY SIBERIAN SWAN

*Karsavina+plus*



*Spesivtseva*   
HANDMADE BY SIBERIAN SWAN

Coming soon



**Width:** X, XX, XXX, XXXX. Narrow, Medium, Medium-Wide, Wide respectively

**Sole Firmness:** S, M, H. Soft, Medium, Hard respectively **Active Arch Support™**

**Platforms:** standard: "Pavlova" standard plus: Pavlova - Plus+  
wider: "Karsavina" wider plus: Karsavina - Plus+



Our models come in standard and "Plus" options, which refers to the width of the platform. Wider platform is not necessarily for wider foot, the platform's width variations may better accommodate individual needs for different foot types (Greek, Egyptian, and Square). Slightly different look, different foot work, that could be caused by different sense of stability, and balance while on pointe, slightly different distribution of weight over your toes. After all, it is not either or, different platforms could be better suited for different type of your practices, and performances.

Siberian Swan is proud to announce its new line of Point Shoes with an **Active Arch Support™**. Our new line of Point Shoes was created with today's dancers in mind. Using state of the art computer aided design, we focused our efforts on the stringent requirements of: ballet schools, professional and semi-professional companies and even recreational dancers.

Siberian Swan Point Shoes with an **Active Arch Support™** is a revolutionary technological achievement that embodies long-lasting durability, lightness, and comfort while maintaining stability, even if used every day. Another key feature is the SHOE's ability to retain its shape and condition even when not in use for a period of time.

The Active Arch Support™ protects dancer(s) feet from undue deformity, reduces stress on the joints and spine, and instills greater confidence.

Our patented technology regulates and controls the degree of flexibility of the inner-sole at the heel, as well as the demi-pointe area. Another important feature of our Siberian Swan Point Shoes is the enhanced ability *rolling through the foot*.

All of these innovations were created to enable better mobility and stability of the ankle joint, leading to correct muscles development.

Today's point shoes require a tremendous effort and time of "breaking-in" a new pair of point shoes. But, that process is inexact and exerts a tremendous amount of stress of fabric fatigue and if done incorrectly or with an application of excessive force may render a new pointe shoe to become LESS durable.

At Siberian Swan Point Shoes with an **Active Arch Support™** we addressed this and many other important issues associated with today Ballet world's requirements.

Please write us an email and set up a presentation of our latest product.

**Siberian Swan Point Shoes with an Active Arch Support™**  
Comfort  
Confidence  
Consistency  
Perfection

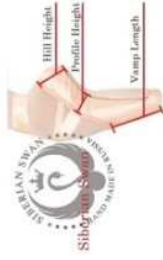






## Enhance your comfort, and confidence level with Siberian Swan:

### CUSTOM ORDERS



Siberian Swan offers custom orders at no additional cost.

Customize the height of your vamp, profile, hill according to your needs.

Try and select the firmness of the inner soles, you may need different ones for different performances and/or practices.

Our technology allows us to accommodate all of your needs

### ACTIVE ARCH SUPPORT

Durable, but flexible sole.

There is no need to break in your pointe shoes, and diminish its durability. It is flexible out of the box.

Rolling through demi-point is a breeze, just select the firmness level at your comfort.

### SPECIAL UNIDIRECTIONAL STRETCH MATERIAL

- Tired of excessive materials hanging over your hill?
- Don't like the wrinkles along the foot? Don't feel a full connection of your foot with the hose?

Siberian Swan offers new technology using strong elastic lengthwise unidirectional fabric from mid-foot to the hill. Not only enhances aesthetic look, but also makes the shoes fit better, stay firmer. All the fabrics are color match



The mid-cut on the picture below is purposely made to demonstrate technology

### VAMP

No need to epoxy your pointe shoes. Siberian Swan pointe shoes comes with a special durable materials out of the Box.

### ATLAS-SATIN

- Are you tired of dulling the shine of your pointe shoes?

You want it shiny or you want it mat? You tell us, and we deliver what you want. No pancaking of your pointe shoes is needed any more.

### ACCESSORIES

- Tired of finding color matched ribbons, elastics?

Siberian Swan has all the color matched accessories, including Drawstrings.

### COLOR !!!

- Have you ever tried to color your pointe shoes? Not fun, right? Paint doesn't stay well?

Siberian Swan will offer custom color shoes made of the initially colored materials (not the shoes) based on your color specification

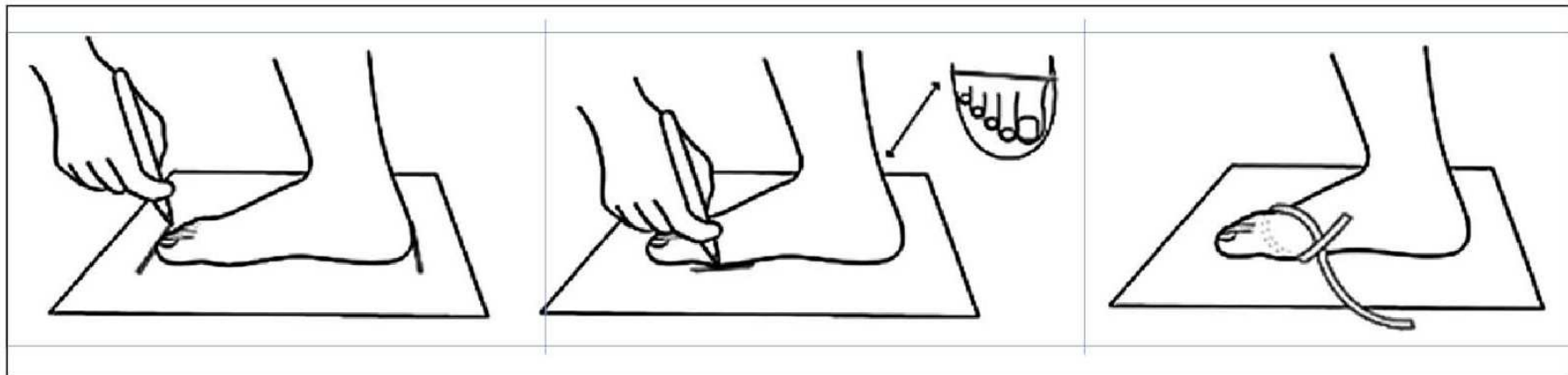


Pointe shoes size chart				Siberian Swan (SW) Width Girth** sizes			
Siberian Swan (SS) length			Style «Pavlova» «Pavlova + Plus»	Style «Karsavina» «Karsavina + Plus»	Width Symbols	©Active Arch Support™ firmness	
SS / UK	USA	mm	inches	Width Girth mm/in	Width Girth mm/in		
2	5	215	8.5	177 / 7.0	185 / 7.3	X, XX, XXX, XXXX  S, M, H	
				181 / 7.1	189 / 7.4		
				185 / 7.3	193 / 7.6		
				189 / 7.4	201 / 7.9		
2.5	5.5	220	8.7	180 / 7.2	188 / 7.4	X, XX, XXX, XXXX  S, M, H	
				184 / 7.4	192 / 7.6		
				188 / 7.5	196 / 7.7		
				192 / 7.7	200 / 7.9		
3	6	225	8.85	183 / 7.2	191 / 7.5	X, XX, XXX, XXXX  S, M, H	
				187 / 7.4	195 / 7.7		
				191 / 7.5	199 / 7.8		
				195 / 7.7	203 / 8.0		
3½	6½	230	9.05	186 / 7.3	194 / 7.6	X, XX, XXX, XXXX  S, M, H	
				190 / 7.5	198 / 7/8		
				194 / 7.6	202 / 7.9		
				190 / 7.5	198 / 7.8		
4	7	235	9.25	194 / 7.6	202 / 7.9	X, XX, XXX, XXXX  S, M, H	
				198 / 7.8	206 / 8.1		
				202 / 7.9	210 / 8.2		
				192 / 7.5	200 / 7.9		
4½	7½	240	9.45	192 / 7.5	200 / 7.9	X, XX, XXX, XXXX  S, M, H	
				196 / 7.7	204 / 8.0		
				200 / 7.9	208 / 8.1		
				204 / 8.0	212 / 8.3		
5	8	245	9.65	195 / 7.7	205 / 8.0	X, XX, XXX, XXXX  S, M, H	
				200 / 7.9	210 / 8.2		
				205 / 8.0	215 / 8.5		
				210 / 8.2	220 / 8.7		
5½	8½	250	9.8	200 / 7.9	210 / 8.2	X, XX, XXX, XXXX  S, M, H	
				205 / 8.0	215 / 8.5		
				210 / 8.2	220 / 8.7		
				215 / 8.5	225 / 8.9		
6	9	255	10	205 / 8.0	215 / 8.5	X, XX, XXX, XXXX  S, M, H	
				210 / 8.2	220 / 8.7		
				215 / 8.5	225 / 8.9		
				220 / 8.7	230 / 9.0		
6½	9½	260	10.23	210 / 8.2	220 / 8.7	X, XX, XXX, XXXX  S, M, H	
				215 / 8.5	225 / 8.9		
				220 / 8.7	230 / 9.0		

Important! Foot measurement must be carried out in standing position

Step on the paper with your foot, make sure to place your weight on your foot. Trace the outline of your foot.

Measure the longest 2 points. Use a ribbon to measure the girth of the foot. Write down the measured length, and width girth (millimeters).



**Foot Length Measure**

**Foot wide Measure**

**Foot Girth**





*"...magical enchantment"*  
East Anglian Daily Times



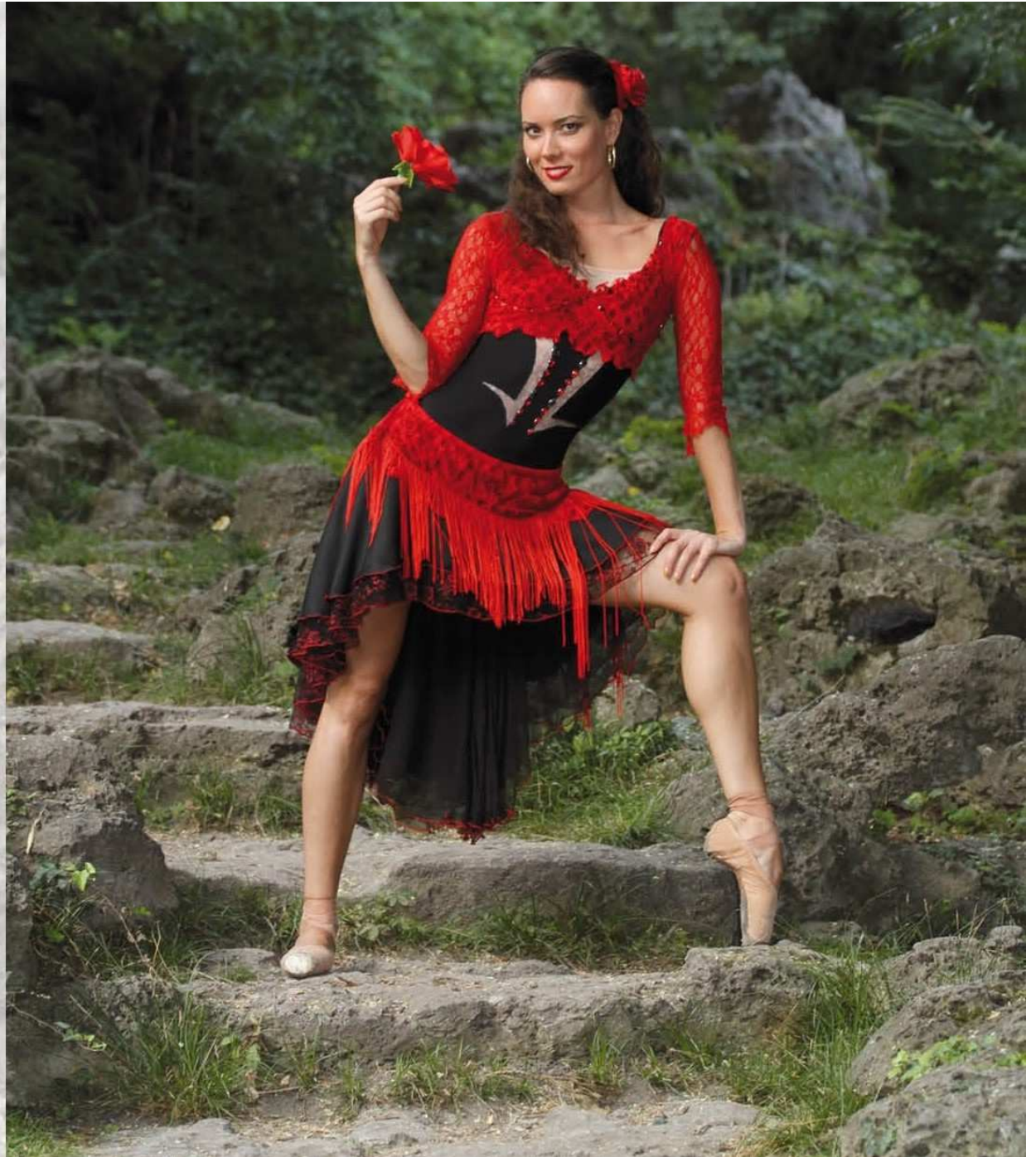
















*"Superb classical dancing brilliant and original..."*  
the Times







**Siberian cedar's extract and oil are components of pointe shoes**

**«Siberian Swan»**

**Cedar oil contains proteins, fats, healthy acids and vitamins. Phosphorus, zinc, magnesium, manganese, iodine, copper and others irreplaceable elements for health and beauty of your feet and joints are also present.**

**Cells' aging in tissues is slowed down. Dryness, peeling and callosities disappear.**

**A peculiar barrier is formed, preventing other substances to harm skin.**

**Small wounds and chaps heal quicker.**

**Cedar oil also stops skin's itching, irritation and redness.**

**Aroma vaporizing from the process of cedar's compression is healthy too.**

**Cedar oil doesn't cause harm to the body and its elements are beneficial for children and pregnant women. The benefit of compressing cedar nut is in its ability to enrich cells and tissues with nutritious elements, to optimize the balance of water in your body and are beneficial for a chapped or dry skin.**

**Ether cedar oil benefits to the process of cells' regeneration. The oil doesn't lose that ability even in combination with other products.**

**Dancing in pointes shoes Siberian Swan your feet remain healthy and beautiful!**

**[www.SiberianSwan.com](http://www.SiberianSwan.com)**



Learn your foot type  
Measure it properly  
Ensure the best pointe fit  
Each step along the way with **Siberian Swan**



Siberian Swan technology allows us to offer customized shoes specifically handcrafted for you to meet your individual requirements. It does not take any special circumstances, like being professional dancer. With Siberian Swan anyone can have shoes specially made for their feet. And it's at no additional cost. Ideally, a help of experienced fitter is a big plus to a dancer, but if not available, we will work with you...

**Size:**

**Width:**

**Firmness:**

**Vamp Length:**

**Profile Height:**

**Hill Height:**

**Name:**

**Comments:**

## **SERGEY BOBROV**

**Honored artist of Russia**

**Artistic director of the Krasnoyarsk state opera and ballet theatre**

The winner of Interregional competition of ballet masters and ballet dancers (1991), the International competition named after Serge Lifar in Kiev (1994), the IX International competition of ballet dancers and choreographers in Moscow (2001), the winner of the award «Soul of Dance» of the «Balet» magazine in the nomination «Knight of the Ballet» (2007).

In 1981 he graduated from the Moscow choreographic school and at once he was accepted in ballet troupe of the Bolshoi theatre. In 1993 he graduated from choreographic faculty of the Moscow institute of choreography (the head of the course – the People's artist of the USSR Yuri Grigorovich).

In 2003 Sergey Bobrov headed the ballet troupe of the Krasnoyarsk state opera and ballet theatre, in 2006 he became the artistic director of the theatre. At the Krasnoyarsk theatre he staged ballets: «Tsar fish», «Konturdans», «Oedipus's Daughter», «The Nutcracker», «Carmen», «The swan lake», «Don Quixote» and «The sleeping beauty», «Bayadere», «Romeo and Juliette», «Giselle», «Cinderella», «The infanta and the clown», «Spring sacred», «The hussar ballad», «Electra».

Among director's works – scenic versions of operas of M. Mussorgsky «Boris Godunov» and «Hovanshchina», the opera «Queen of spades» of P. Tchaikovsky, the opera ballet «Carmen». He staged ballets «Electra» and «Antigone» at the Sofia national opera.

The judge of the All-Russian competition named after G. S. Ulanova (Krasnoyarsk, 2008, 2010), the artistic director of the I All-Russian ballet forum «Ballet XXI Century» (Krasnoyarsk, 2010, 2012), the International ballet forum «Ballet XXI Century» (Krasnoyarsk, 2014), the III International competition of young opera singers and directors named after Pyotr Slovtsov (Krasnoyarsk, 2015).